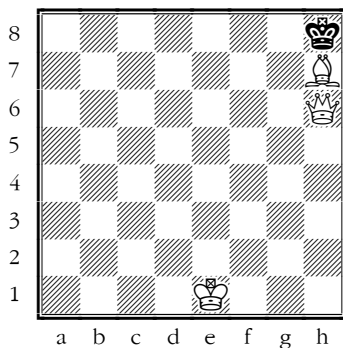
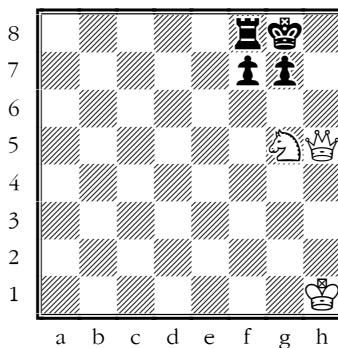


Nine Basic mates



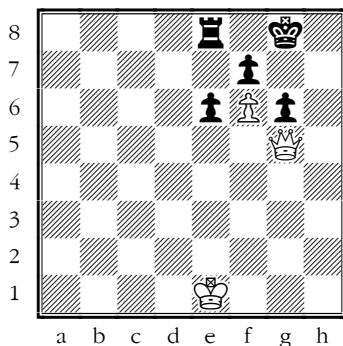
1 Bg6+ Kg8, 2 Qh7+ Kf8, 3 Qf7 mate

1 Bf5+ Kg8, 2 Be6 mate

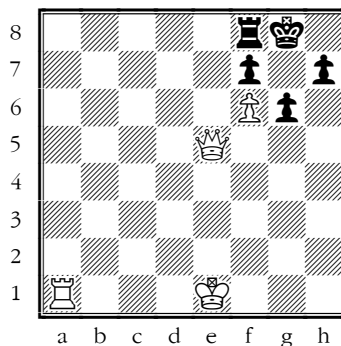


Black to move

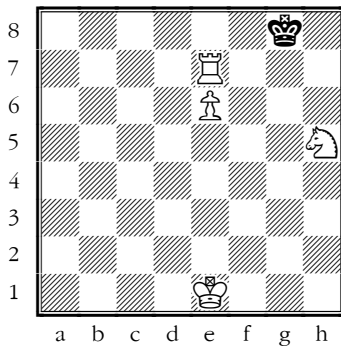
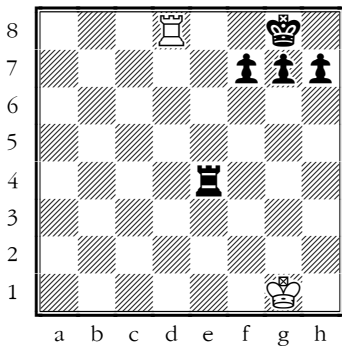
1...Rb8, 2 Qxf7+ Kh8, 3 Ne6 Rg8, 4 Qh5 mate



1...Kh7, 2 Qh4+ Kg8, 3 Qh6 and 4 Qg7 mate



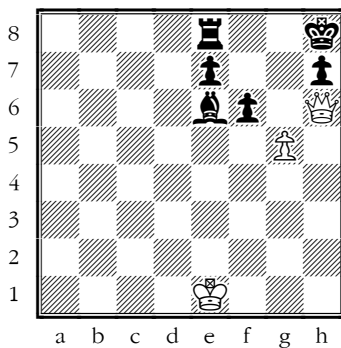
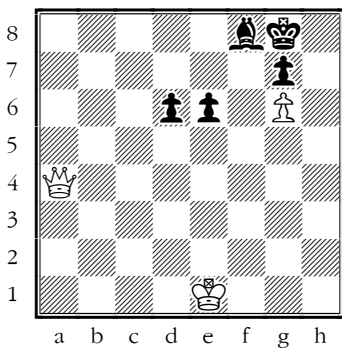
1 Qg5 Kh8, 2 Qh6 Rg8, 3 Qxh7+



Oh, how many times have we overlooked this...

Arab mate

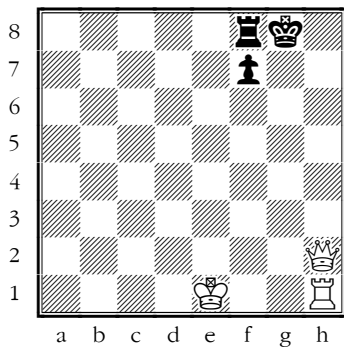
1 Nf6+ Kh8, 2 Rh7 mate



Black to move

1 Qh5 Be7, 2 Qh7+ Kf8, 3 Qh8 mate

1 g6 Bg8, 2 g7 mate

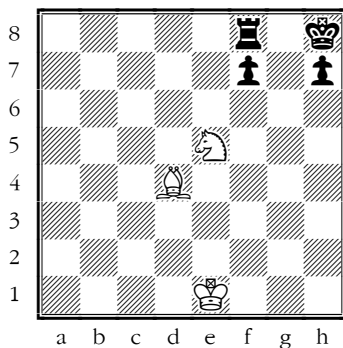


Black to move

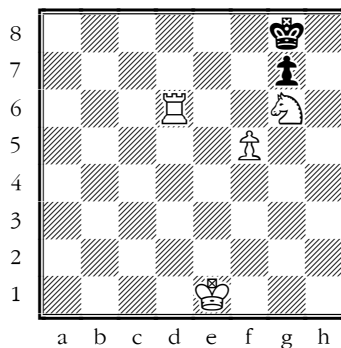
1...f5 2 Qh7 mate

1...Re8 2 Qh8 mate

Nine pretty mates

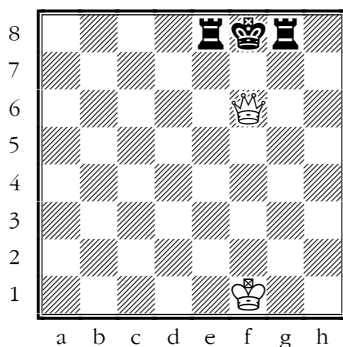


1 Nxf7+ or 1 Ng6+ mates

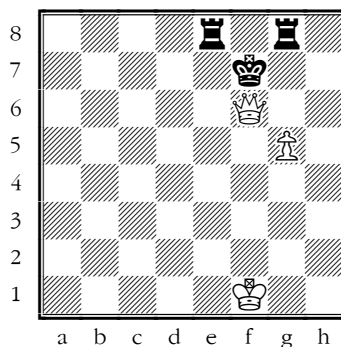


1 Rd8+ Kf7, 2 Rf8 mate

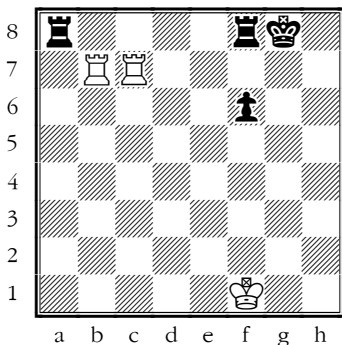
1...Kh7 2 Rh8#



epaulette mate



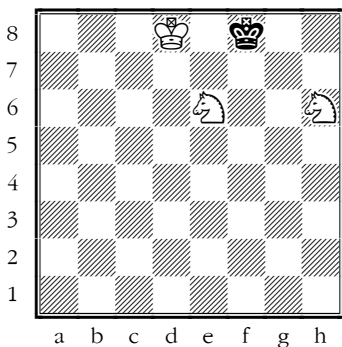
swallow's tail



'blind swine'

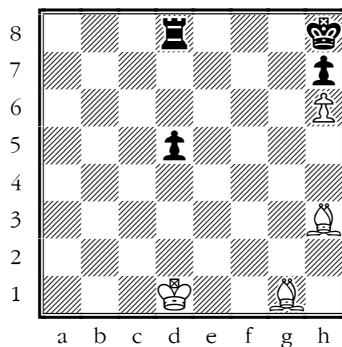
1...Rfd8, and White has only perpetual

the Rooks 'grunt out check' but cannot get sight of mate (Janowski)



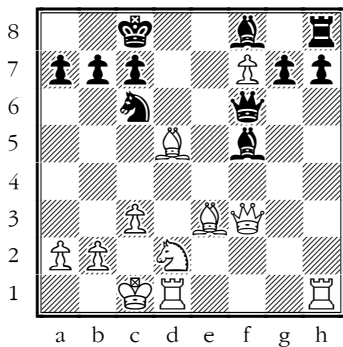
cannot be forced in this situation

but worth looking out for in a castled King's-side position, because the Knights cover so many squares



1 Be6 d4, 2 Bh2 and 3 Be5 mate

as Rotlewi-Rubinstein

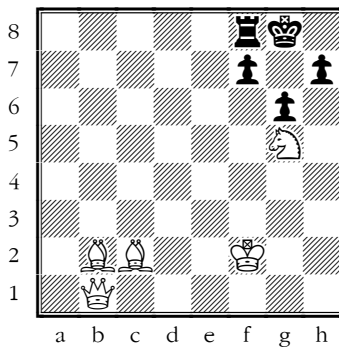


Black to move

Boden's mate

Macdonnell-Boden 18

1...Qxc3+ 2 bxc3 Ba3 mate

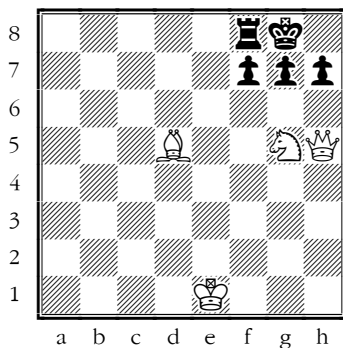


Blackburne's mate

1 Qh1 h5, 2 Qxh5! gxh5, 3
Bh7 mate

Black to move

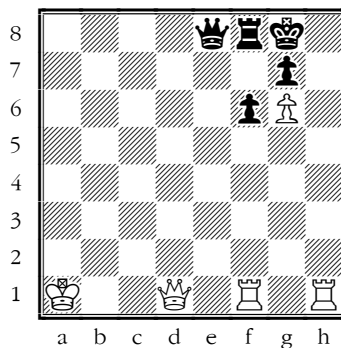
Nine tricky mates



Black to move

Greco's mate

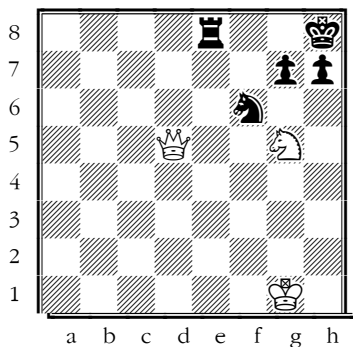
1...h6 2 Bxf7+ Kh8 3 Qg6!
hxg5 4 Qh5 mate



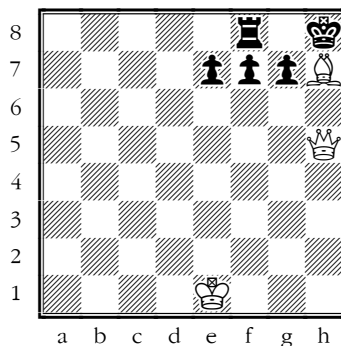
Damiano's mate

1 Rh8+ Kxh8, 2 Rh1+ Kg8, 3
Rh8+ Kxh8, 4 Rh1+ Kg8, 5 Qh7
mate

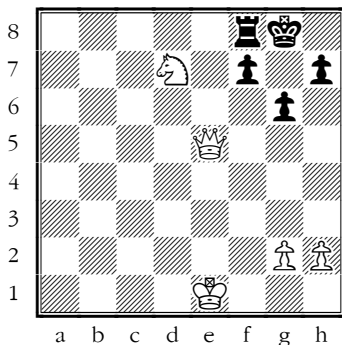
Philidor's legacy



1 Nf7+ Kg8 2 Nh6+ Kh8 3
Qg8+ Rxg8 4 Nf7 mate



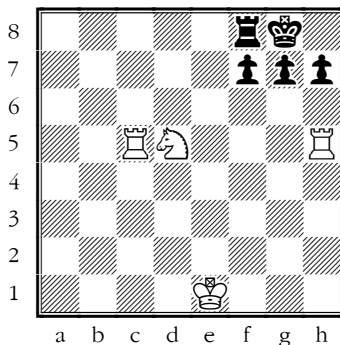
Can Black, to move, save the
game? 1...g6! 2 Qh6!



A common pattern

1 Nf6+ Kh8, 2 Nh5+ f6
escapes

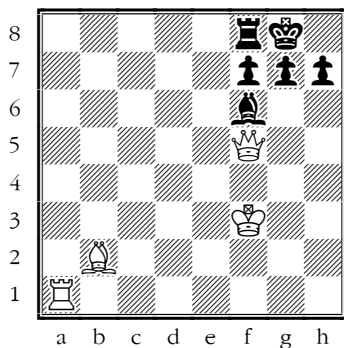
1 ... Kg7, 2 Ne8++ Kh6, 3 Qf4+
g5, 4 Qf6+ Kh5, 5 Ng7+ and
White needs only a Pawn on
g2/h2 to force mate



Anastasia's mate

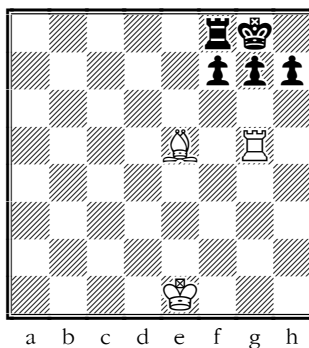
1 Ne7+ Kh8, 2 Rxh7+

Four mates with rook and bishop



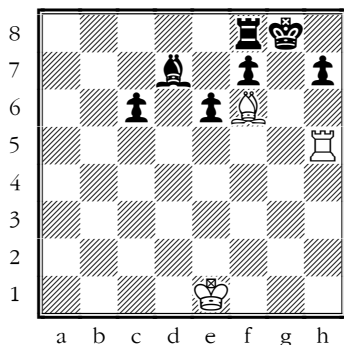
Morphy's mate

1 Qxf6 gxf6, 2 Rg1+ Kh8 3 Bxf6 mate



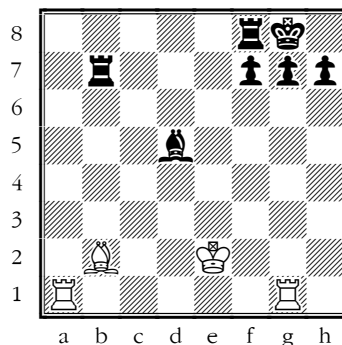
Morphy's concealed mate

1 Rxg7+ Kh8, 2 Rxf7+! Kg8, 3 Rg7+ Kh8, 4 Rg1+ Rf6, 5 Bxf6 mate



Black to move

1...Rc8, 2 Rg5+ Kf8, 3 Rg7!



Pillsbury's mate

1 Rxg7+ Kh8, 2 Rg8+ Kxg8, 3 Rg1 mate

(compare Morphy's mate)